

ENGLISH TITLE (Times New Roman 13, Centered)

ROMANIAN TITLE (Times New Roman 11, Centered)

***SURNAME First name*^{1*}, *SURNAME First name*²** (Times New Roman 11, Bold, Italics, Centered)

*Corresponding author e-mail: Times New Roman 10

Abstract.

The abstract drafted in English (10-15 rows, with special reference to research results). ***Times New Roman 9.5 ITALIC***

Key words: min. 3 – max. 5

Rezumat.

Rezumatul este scris în limba română, 10-15 rânduri, subliniind rezultatele cercetării. ***Times New Roman 9,5 ITALIC***

Cuvinte cheie: min. 3 – max. 5

INTRODUCTION (Times new Roman, 11, B, Center, All Caps)

The present document is arranged so that it can be used as a model. It is also a template on which you can work directly by replacing the corresponding paragraphs.

The papers must be written using the text editor Word – in the Microsoft Office application.

The page format (Page Setup): A4 (Paper Size), Portrait (Orientation), Top 2 cm, Bottom 2 cm, Left 2 cm, Right 2 cm, Header 1 cm, Footer 1 cm (Margins). In the case of larger tables or figures the Landscape orientation may be used – with the same dimensions.

The text will be written on one column, The scientific papers must meet the following mandatory structure: INTRODUCTION, MATERIAL AND METHOD, RESULTS AND DISCUSSIONS, CONCLUSIONS, ACKNOWLEDGMENTS and REFERENCES.

Please insert page numbers.

Please take into account that in English, the decimal separator will be replaced through a point.

Please find below the models for basic headings and paragraphs for each section.

INTRODUCTION (Times New Roman, 11, B, Center, All Caps)

¹ Times New Roman 10

² Times New Roman 10

Introduction. Text. Text. Text. Text. Text. Text Text. Text. Text. Text. Text. Text. Text. Text. Text. Text. Text. Text. Text. Text.

Normal Style, Times New Roman, 11, Justify, First Line – 1 cm, Line Spacing – Single.

Latin names – italic. The bibliographical references will be placed between round brackets, regular and the references for figures and tables between round brackets, italic. Ex: (Cociu and Oprea, 1989; Davarynejad *et. al.*, 2008; Tofan, 2001).

MATERIAL AND METHOD (Arial, 11, B, Center, All Caps)

Material and method. Text. Text. Text. Text. Text. Text. Text. Text. Text. Text. Arial 9,5 Justify, First Line – 1 cm, Line Spacing – Single).

RESULTS AND DISCUSSIONS (Times new Roman, 11, B, Center, All Caps)

Results and discussions. Text. Text. Text. Text. Text. Text. Text. Text. Text. Text (Normal Style, Times New Roman, 11, Justify, First Line – 1 cm, Line Spacing – Single).

Table 1 (Arial, 9, Right)

Title (Arial, 9 Bold, center)

XXXXXXXX	x	x	x	x	x	x	x	x	x
Table text – Arial, 9	Table line thickness – 1/2								

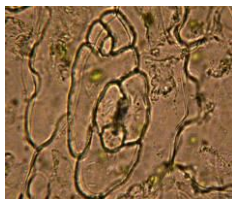


Fig. 1. Figure title Arial, 9, Center

CONCLUSIONS (Times new Roman, 11, B, Center, All Caps)

Conclusions. Text. Text. Text. Text. Text. Text. Text. Text. Text. Text.
(Normal Style, Times New Roman, 11, Justify, First Line – 1 cm, Line Spacing – Single).

ACKNOWLEDGMENTS (Arial, 10, B, Left, All Caps)

(Normal Style, Arial, 9, Justify, Hanging – 1 cm, Line Spacing – Single).

REFERENCES (Arial, 10, B, Center, All Caps)

1. **Cociu V., Oprea Șt., 1989** - *Metode de cercetare în ameliorarea plantelor pomicole*. Ed. Dacia, Cluj, p. 29, 124-129. Normal Style, Arial, 9, Justify, Hanging – 1 cm, Line Spacing – Single).
2. **Davarynejad G.H., Szabo Z., Nyeki J., Szabo T., 2008** - *Phenological Stages, Pollen Production Level, Pollen Viability and in vitro Germination Capability of Some Sour Cherry Cultivars*. Asian Journal of Plant Sciences, 7, p. 672-676.
3. **Tofan Clemansa, 2001** – *Igiena și securitatea produselor alimentare*. Editura AGIR, București, p. 56.
4. *****, 2009** – *Agricultura UE*. Comisia Europeană.

The in-text quoting of the bibliography will be made using the square parenthesis' in which the first author will be written and/or the first author and colab, followed by the year of publishing